

# Reflex10 Relay Test System



Designed to address the requirements for affordable precision relay testing, the Reflex 10 provides a turn key solution for low to medium volume testing and a wealth of accessories to cater for a wide range of device types.

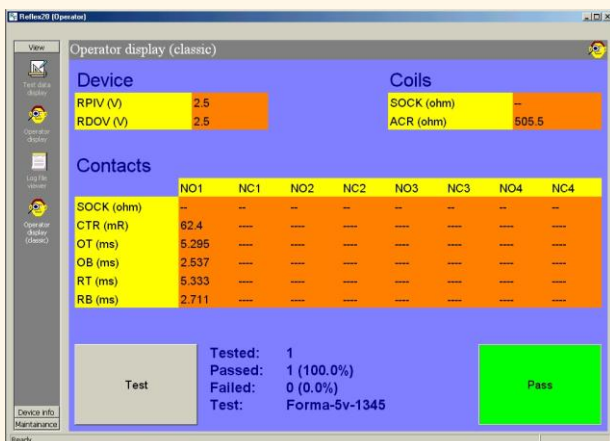


The Reflex 10 complements the ART range of test equipment to provide low cost, high quality test capability ideally suited to manual production lines and engineering “quick look” analysis. ART’s common user interface provides compatibility across the RT290 and Reflex parametric product ranges. The PC parallel port connection provides portability and allows the system to be shared between test stations.

## Key features

- Low cost
- Handles a wide range of relay devices up 4 pole form C
- Highly portable using PC parallel port interface
- Turn-key software – load up pre-written device tests to CECC, IEC, MIL spec and custom
- Full range of accessories and build options to cater for a wide range of device types

## Standard items supplied:



## Menu-based software:

Test sequences are simple, clear and built from pre-written test types to CECC, IEC or custom formats using menu selection. A ‘Relay Wizard’ macro allows a complete device test to be built from a few simple questions and answers. Test sequences can be run, re-tested, cycled or step-executed to enable fast development of a test program.

**Built-in functional check:** Internal hardware adds capability for system performance verification.

**Portability:** The system is designed for ease of transportation between test cells to allow the user to make optimum use of the system when and where it is needed.

**Wide range of device types:** Handles DC monostable or bi-stable (single and dual coil) mechanical devices up to 4-pole changeover contacts without additional test equipment.

**Wide range of contact materials:** Various contact materials can be accommodated by internal low and medium power loads. High power loads can also be provided with the ASY0700 option.

**Kelvin device connections:** All contact connections are 4-terminal (Kelvin) with loop resistance (continuity) measured to confirm correct device insertion before test.

**Hardware options list:**

**Coil temperature correction:** Platinum probe to measure ambient temperature to correct coil resistance values back to a defined standard.

**External control:** Handler interface connection for use in a semi-automated environment.

**High contact current:** 30 Volt, 10 Amp contact load unit ASY0700.

**Remote control:** An external remote offers a simple user interface - PASS/FAIL lamps and TEST/RETEST switches.

**Calibration:** A semi-automated calibration/self test module is available.

**For further details contact:**

Applied Relay Testing Ltd

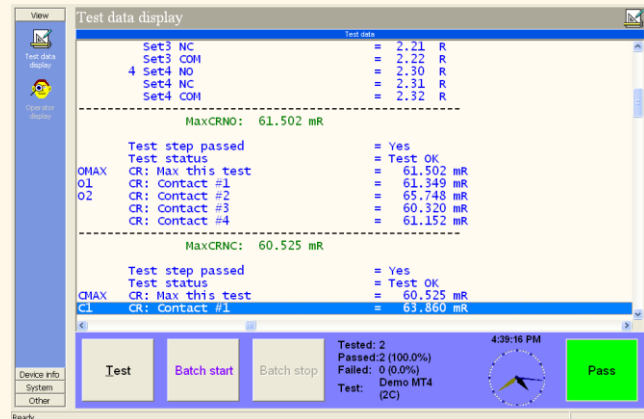
Tel: +44 (1202) 892777

Fax: +44 (1202) 894268

Email: sales@appliedrelaytesting.co.uk

Web: www.appliedrelaytesting.co.uk

**Software compatibility:** Test programs transportable between all ART parametric test systems.



**Flexible reporting:** Data can be viewed, printed or exported to print or datalog files, this data can then be inserted into a wide range of spreadsheet and database packages. The integrated 'Reporter' package can be used to automatically generate customised Microsoft Word based reports.

**'Spreadsheet'-style programming:** Test conditions can be expressions as well as fixed values, for example to measure contact resistance at 110% of the operate voltage.

**On-line documentation:** All hardware and software documentation is supplied in an 'on-line' form. One key-press calls up test and operational information in a context-sensitive display. Documentation includes 'How to construct test programs', 'Frequently asked questions', and hardware interfacing information. A simple printed user guide provides all the information required to set-up the system and start testing.

**Built in manual control tool:**

