

# Reflex 51

Relay Life Test System



REFLEX 51 offers a complete range of life test hardware and software modules to enable any Relay Life Test application to be easily and quickly configured, no matter how large or small. ART offer complete Turn-Key Life Test solutions to meet specific customer needs or modules from REFLEX 51 range can be used to create laboratory life test solutions or Upgrade existing In-House Life Testers or build complete new In-House Life Test Systems.



## Key features:

- Completely modular
- Easily reconfigurable
- High-Speed ADC per contact Architecture
- AC Power Switching Modules
- DC Power Switching Modules
- Time Measurement Modules
- Easy-to-Use Graphical Operator Interface
- Automatic Report Generator
- Export Life Test Results in Excel Format
- The system is suitable for testing small, medium and power relays to meet the needs of GM-9111P, EN116000-3, MIL-R-83536/A, MIL-PRF-6106K and MIL-R-39016E.

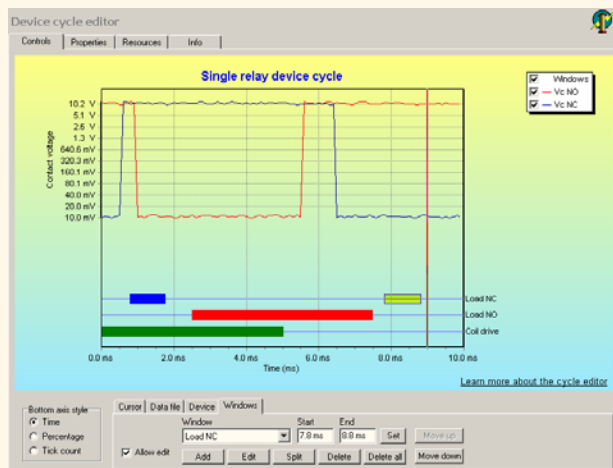
## Turn-key solution

Complete solutions for ALL types of Relay & Switch Life-Test applications

- Small self-contained bench-top systems
- Large self-contained rack based systems
- Very Large distributed systems, multiple relays, multiple contacts



## Graphical interface for easy test program generation:



**ARTWorks software suite:** A comprehensive software suite is supplied with the system which provides all the functionality to configure the system using a user friendly graphical interface and to run the life test.

ARTs **Reporter** software package is also included which allows the user to automatically generate customised Microsoft Word based reports.

## Technical Specifications:

Supply requirement	100-240Vac, 47-63Hz
PC operating system	Windows™ 98se or later
Operating contact/load voltage range	low level to line voltages
Load current	0 - 100 Amps (for higher current switching modules contact ART)
Life-test cycle rate	0.001Hz to 100Hz (variable duty cycle)
Stick counts (contact has welded)	0-65535
Allowed failures	0-65535 – system stops cycling when limit is reached
Results data logging	Life test range programmable into a number of intervals. Number of test cycles and fail counts recorded for each device in each interval
Dimensions	483(w) x 266(h) x 481(d) excluding handles 19" rack mounting 6U high.

### For further details contact:

Applied Relay Testing Ltd  
 Tel: +44 (1202) 892777  
 Fax: +44 (1202) 894268  
 Email: [sales@appliedrelaytesting.co.uk](mailto:sales@appliedrelaytesting.co.uk)  
 Web: [www.appliedrelaytesting.co.uk](http://www.appliedrelaytesting.co.uk)

**Device adaptors and interfacing to DUT and environmental ovens:** Devices can be mounted locally on the base of the unit or externally for example within an adjacent environmental chamber and connected by simple low-cost adaptor leads.

**Portable self-test and traceability calibration pack:** The system features built-in functional test capability for routine confidence checking. A calibration module is available to semi-automate the calibration procedure.

**PC controller:** A host PC is used to configure the start the life test and routinely collect the life test data during the course of the test. The software allows the user to display the life test results for any of the modules to which it is connected. The system can be supplied either with an integrated or external controller as required.

**Front panel display:** An optional LCD display can be mounted to the Reflex 51 front panel which shows a summary of the life test progress. A number of user configurable front panel LEDs can also be used to display such information as load switching, coil state etc.

### System architecture:

- Single 19" chassis mounting open frame housing PC interface board and optional display.
- Up to 6 four channel measurement modules each capable of measuring contact voltage drop and load current across a single contact.
- Up to 16 load/coil switching modules
- Integral PC option